

ANGLE VALVE FOR FIRE PROTECTION SYSTEM

SPECIFICATION

- The Angle Valve is a indoor fire-fighting equipment in high-storey buildings, warehouses, factories, public buildings, ships. Etc
- It is usually complete with fire hose and nozzles.
- Threaded connection to BS21, ASME 1.20.1

PRESSURE/TEMPERATURE RATINGS

Working pressure	16/25 bar
Testing Pressure	Shell: 24/37.5 bar Seat: 17/26 bar
Working temperature	NBR $\leq 80^{\circ}\text{C}$ EPDM $\leq 120^{\circ}\text{C}$
Suitable Media	Water

MATERIALS

Part	Material	BS
Body	□Ductile Iron, □Brass	□Gr.420/12, □CZ122
Cover	□Ductile Iron, □Brass	□Gr.420/12, □CZ122
Disc	□Ductile Iron + NBR, □Brass	□Gr.420/12+ NBR, □CZ122
Stem/bolt/nut	Stainless steel, □Brass	SS410, □CZ122
O-Ring	□EPDM, □NBR	
Seat ring	Brass	CZ 122
Handwheel	□Ductile Iron, □PVC	□Gr.420/12, □PVC
Painting	Red Epoxy Power Coating	

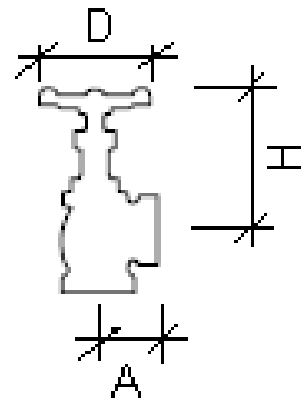
DIMENSIONS

Nominal Size mm	A mm	H mm	D mm
50	65	110	100
65	75	115	100

Fig. 227

PN16/25

DN 50-65



Note: Design and specifications are subject to change without prior notice.