

PRESSURE GAUGE

- Fig. 701 pressure gauge is designed and used for pressure measurement for various industries. This durable gauge is ideal for services on water, air, oil and other pressure media not corrosive to brass.
- Fig. 702 Stainless steel casing pressure gauge is designed and used for pressure measurement for various industries. This durable gauge is ideal for services on water, air, oil and other pressure media.

SPECIFICATION

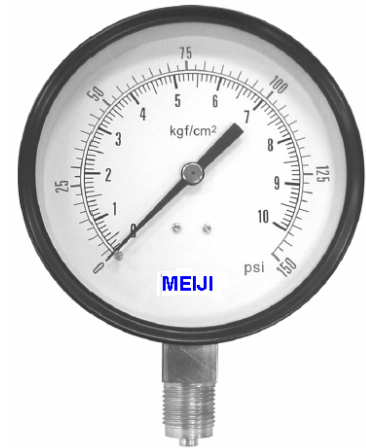
Parts	Fig.701	Fig. 702
Nominal Diameter	65mm, 100mm	65mm, 100mm
Dial	White aluminium with black & red markings	White aluminium with black & red markings
Case	Steel, Painted Black	Stainless Steel 304
Lens	Glass	Polycarbonate
Pointer	Aluminium, Painted Black	Aluminium, Painted Black
Socket	Brass	Brass, Stainless Steel 304
Connection	1/4" (65mm dial), 1/2" (100mm dial) BSP Bottom Entry	1/4" (65mm dial), 1/2" (100mm dial) BSP Bottom Entry
Movement	Brass	Brass, Stainless Steel 304
Operating pressure	75% of Full Scale Value	75% of Full Scale Value
Ambient Temperature	-10°C to 60°C	-10°C to 60°C
Protection	IP 52	IP 65
Accuracy	1.5% (1% Fig.701-AC1)	1%

PRODUCT CODE

Range	Fig.701 (Product code)	Fig.702 (Product code)
-760mmHg~4kg/cm ² /psi	701-01	702-01
0~10kg/cm ² / psi	701-02	702-02
0~16kg/cm ² / psi	701-03	702-03
0~20kg/cm ² / psi	701-04	702-04
0~25kg/cm ² / psi	701-05	702-05
0~30kg/cm ² / psi	701-06	702-06
0~50kg/cm ² / psi	701-07	702-07

Note.

- Fig.701-AC1 with Accuracy 1%
- Other range and unit available upon request.
- Specifications are subject to change without prior notice.



Pressure gauge
Fig. 701
Fig.701-AC1



Pressure gauge
Fig. 702